

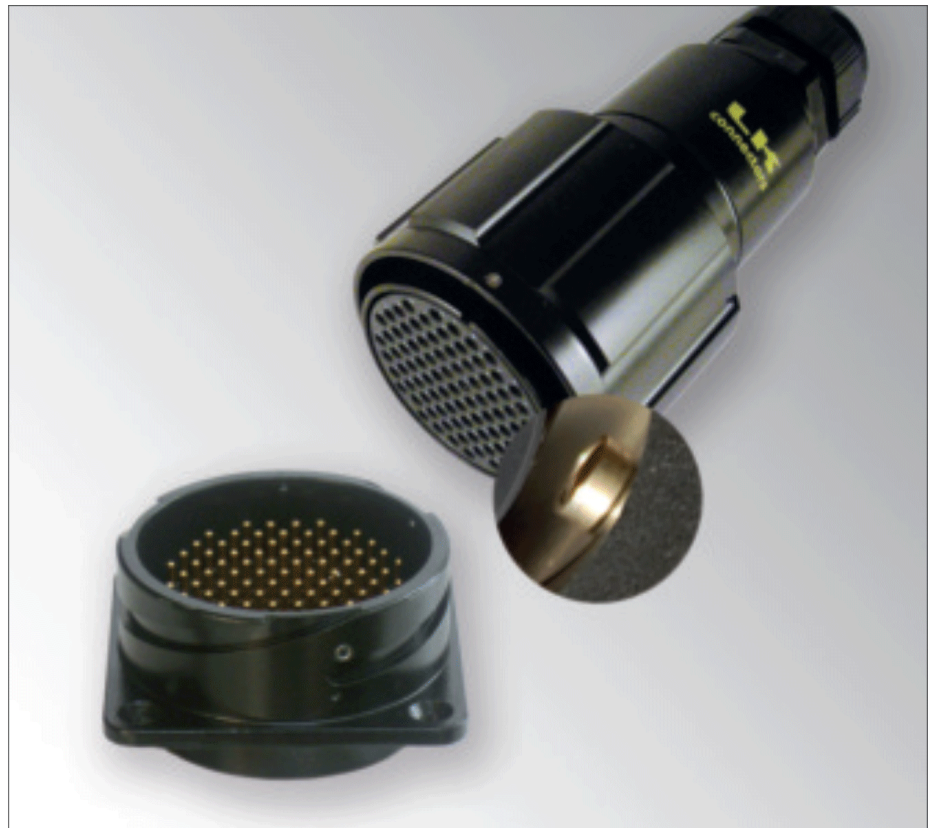
LK Audio Multipin

Based on the MIL-DTL-5015 and VG 95234 standards, LK Audio connectors adhere to the basic principles of strength and reliability of specified military components. The restyling and construction of the LK Audio range has been specifically designed to meet the needs of the entertainment industry. LK Audio configurations and their wiring standards, support secure connection for all Live and PA Rental business applications.

- 13 to 200 crimp gold pins (4 to 66 channels) in male/female panel and cable versions
- Based on military standard MIL-C-5015 and VG 95234 for superior strength and reliability
- Easy and error-free mating for fast connections
- Excellent resistance against accidental unlocking caused by shocks and vibrations
- Audible snap in quick bayonet lock
- Cable version with easy-grip long metal locking ring
- Roller studs for easier coupling
- Body made of high quality aluminium with resistant black finishing
- Guaranteed for over 2000 coupling operations
- IP68 rated when mated
- Cable strain relief with locknut (or with anti-bending spring from 13 to 54 pins version)

Options

- Black and colored (blue, red, green, yellow) rubber locking rings
- Silver pins (for 13 to 85 pin versions)
- Solder pins for the entire range available
- Male and female connector dust caps
- Reverse configurations available on request



The **LK Audio Multipin** range features from 13 to 200 pins (4 to 66 channels) **Studs** are rollover version ensuring easier coupling and a longer number of operations due to a lower wear and tear of coupling ramps.

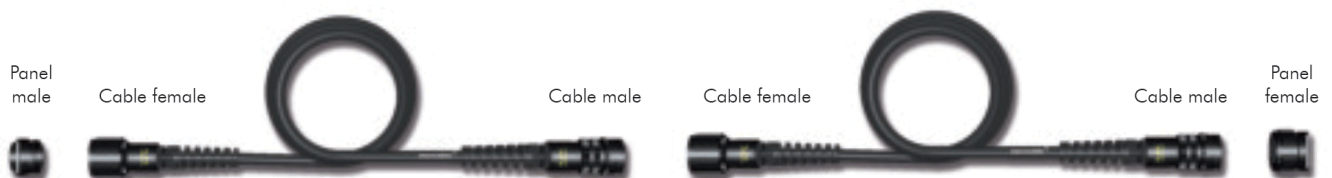


Rubber locking rings are available for cable connectors in all configurations.



Reverse Series Locking ring on male connectors available on request in all configurations.

STANDARD WIRING



LK Audio Series Connector (from 13 to 150 poles, pins are to be ordered separately. 200 poles pins included)

Cable mounting

Male



Code	Cable relief
LK 13 MV	PG11 with spring
LK 19 MV	PG16 with spring
LK 25 MV	PG16 with spring
LK 37 MV	PG21 with spring
LK 54 MV	PG21 with spring
LK 85 MV	PG29 with locknut
LK 150 MV	PG36 with locknut
LKI 200 MV (solder pins)	PG36 with locknut
LKA 200 MV (crimp pins)	PG36 with locknut

Female



Code	Cable relief
LK 13 FV	PG11 with spring
LK 19 FV	PG16 with spring
LK 25 FV	PG16 with spring
LK 37 FV	PG21 with spring
LK 54 FV	PG21 with spring
LK 85 FV	PG29 with locknut
LK 150 FV	PG36 with locknut
LKI 200 FV (solder pins)	PG36 with locknut
LKA 200 FV (crimp pins)	PG36 with locknut

Panel mounting

Male



Code	
LK 13 MP	13 poles
LK 19 MP	19 poles
LK 25 MP	25 poles
LK 37 MP	37 poles
LK 54 MP	54 poles
LK 85 MP	85 poles
LK 150 MP	150 poles
LKI 200 MP (solder pins)	200 poles
LKA 200 MP (crimp pins)	200 poles

Female



Code	
LK 13 FP	13 poles
LK 19 FP	19 poles
LK 25 FP	25 poles
LK 37 FP	37 poles
LK 54 FP	54 poles
LK 85 FP	85 poles
LK 150 FP	150 poles
LKI 200 FP (solder pins)	200 poles
LKA 200 FP (crimp pins)	200 poles

Cable mounting with rubber locking ring

Female



Code	
LKP * FV	* poles
LKP * FV **	* poles, ** color

LKA Connectors for PCB



Code	
LKI 13 MP PCB	13 poles
LKI 25 MP PCB	25 poles
LKI 37 MP PCB	37 poles
LKI 54 MP PCB	54 poles
LKI 85 MP PCB	85 poles
LKI 150 MP PCB	150 poles

Pins

Male



Crimp version	Gold for
LK PMD	LK 13-19-25-37-54-85
LK PMA	Silver for LK 13-19-25-37-54-85
LK PMD R	Gold for LK 150
LK PMD RR C	Gold for LK 200

Solder version available

Female



	Gold for
LK PFD T	LK 13-19-25-37-54-85
LK PFA T	Silver for LK 13-19-25-37-54-85
LK PFD R T	Gold for LK 150
LK PFD RR C	Gold for LK 200

Solder version available

Accessories

Dust cap



LK 20 TPMN	For LK 13-19
LK 24 TMPN	For LK 25
LK 28 TPMN	For LK 37
LK 32 TPMN	For LK 54
LK 40 TPMN	For LK 85-150-200

For connectors without locking ring

Dust cap



LK 20 TPFN	For LK 13-19
LK 24 TPFN	For LK 25
LK 28 TPFN	For LK 37
LK 32 TPFN	For LK 54
LK 40 TPFN	For LK 85-150-200

For connectors with locking ring

Rubber locking ring



LK 20 RL**	For LK 13-19
LK 24 RL**	For LK 25
LK 28 RL**	For LK 37
LK 32 RL**	For LK 54
LK 40 RL**	For LK 85-150-200

Items subject to Minimum Order Qty

**	BI	R	G	Y
	Blue	Red	Green	Yellow

